



ACCURATE MEASUREMENT, APPROPRIATE EVALUATION, SUSTAINABLE PLANNING.

Reduce speed, maximize safety

- GPRS Connectivity - Mobile internet communication with your system
- Flash Update - Firmware update without product return to factory
- LightWeight Design - Lightweight means easy operation
- Smart Install - Installation done in minutes. Easy and safe!
- WebApp Shop - Various upgrades for your system are available in the Webapp shop
- Climate Proof - Worldwide operation in different climate zones
- LowPower Design - Enables minimal energy supply

DKT
SECURE TRAFFIC SOLUTIONS

DSD radar speed display - light / smart / pro

The DSD radar speed display is the ultimate speed reduction tool. In addition to displaying a vehicle's current speed in green (provided it is below the programmed maximum speed) or in red (if exceeding the speed limit), it also shows the driver a smiling or frowning face. This feedback system was invented by DKT and ensures high acceptance rates among drivers. The DSD is the original!

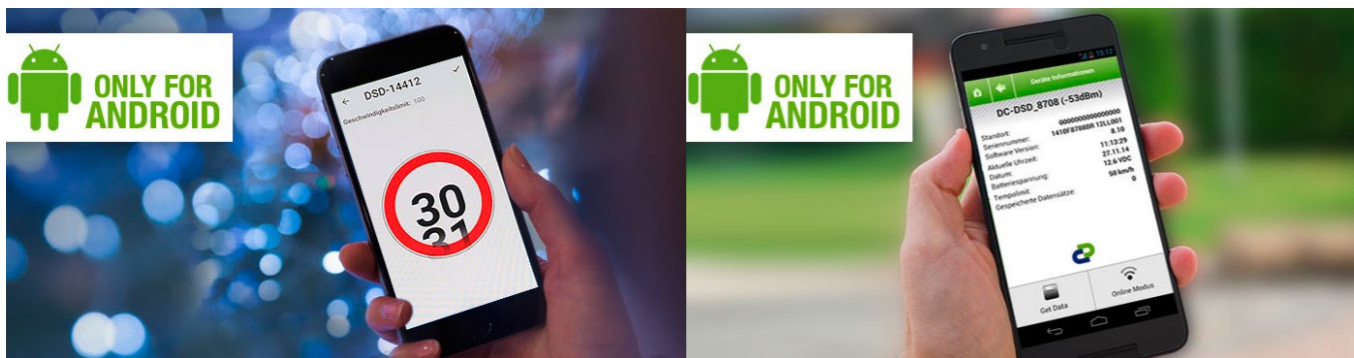
It has modern sensor technology that can record speeds starting at 3 km/h so it can be used even in pedestrian zones.



Even better: the non-breakable, lightweight device can be installed by a single person in only 5 minutes.

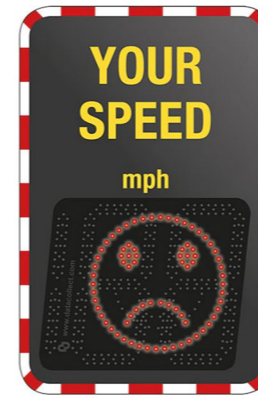
The web-based software package myTrafficdata is the communication center for all your DSD Radar speed displays.

Full control and secure access at all times. Manage all of your data wherever you are. MyTrafficdata enables the creation of setup files, the visualization of graphics, statistics and reports, the administration of your systems and measuring points and the processing of external data formats.



The DSD Light App is used to change the speed threshold of the DSD.

The DSD Full App is used to parameterize and read out the traffic data of the DSD.



DSD light

High-performance display system with display of speed and smiley face. The lettering / motive above the display can be adjusted. DSD light without data recording.



DSD smart

High-performance display system with display of speed and smiley face. The lettering / motive above the display can be adjusted. DSD smart with data recording.



DSD pro

Flex-Display – one or two-line LED-text
Your individual text Red (negative) and green (positive) LED text messages
Scrolling text for longer messages
Static text or scrolling text

Your benefits at a glance

The web-based program package myTrafficdata is the communication center for your DSD speed display system!
Full control and secure access at all times. Manage all of your data wherever you are.

Flexibility Individually adaptable

The DSD Pro is ready for anything thanks to its flex display. Do you want to add another warning sign, such as "Slow Down, School Ahead" or "Animal Crossing"? No problem. The easy-to-use myTrafficdata software allows you to display the text of your choice on one or two lines. A truly versatile display system!

Stability Solid and robust

The new DSD speed display system is extremely robust. It boasts a weather and UV resistant plastic case and a scratch-resistant Makrolon front panel. You have never seen a more durable sign!

Individuality
Your location and your motive
Your site, your safety message! We place your city logo, company logo, individual picture, message or skyline on the DSD.

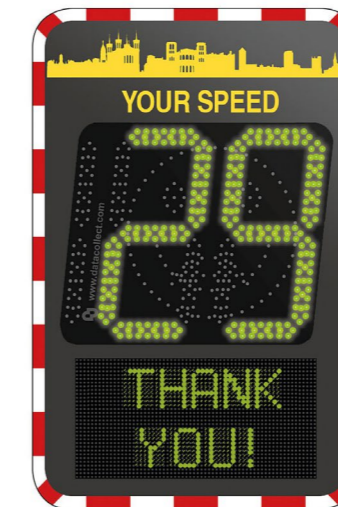


Visibility Early speed indication

The sooner a driver sees the speed display and realises how fast they are driving, the more time they have to reduce their speed. That's why the DSD is specifically designed to aid visibility, with 480 high-performance, built-in LEDs and numbers that are around 34-cm tall. Each LED features automatic brightness control, meaning this might just be the best display on the market.

Lightweight Easy installation

The lightweight DSD (6 kg for the basic version, 7.5 kg for the DSD Pro) is easy for anyone to install and improves work-safety for installations above ground level.



DSD flex traffic message board - Speed and Message Display Board - in one!

The DSD flex can be used as a speed display sign, a message board display or a combined speed and message board display. During heavy traffic volumes the speed including behavioural feedback can be displayed, e.g. a smiley or sad face. During low-traffic volumes the display can become a compact message board/information sign. Local events can be advertised or road warnings concerning accidents or adverse weather conditions can be shown. Regardless of the mode in which the DSD flex is operated, traffic data is always recorded bidirectionally to give accurate speed and volume data.



The DSD flex enables quick and efficient mode changes operated from the comfort of your office via our integrated LTE modem connection.

Totally customisable for any situation

Configure your DSD flex online at www.mytrafficdata.com. Preview what will be displayed on your DSD flex. Choose from a predefined image database and load up to 4 images or text messages directly onto the DSD flex for each status/speed option e.g. up to and including PSL, greater than PSL, PSL +20% and above. (PSL = Post Speed Limit)



Example configuration, as a speed display



Up to 30 km/h alternately, per vehicle

31 to 35 km/h

36 to 70 km/h

Configuration examples for the message board/information display option



Your benefits at a glance

Communication myTrafficdata

Our myTrafficdata software is the communication center. The LTE modem integrated in the DSD flex enables the display to be configured quickly and easily. Furthermore your traffic data is available straight away on your PC (subject to your LTE/network speed). Meaningful traffic data reports - with just a few clicks!

Flexibility Individually customizable

With the help of the individually configurable display, the DSD flex can be utilised in a vast range of applications. You decide how and what should be displayed. You choose from an image database and load up to 4 of those images and/or your desired text directly onto the DSD flex for each application e.g. thank you/compliant messages, advisory or warning messages.

Individuality Your location and your options!

Any announcement for your traffic speed reduction program can be shown on the DSD flex display. We can also include your company or municipality logo. Sponsorship messages or your city tagline can be displayed on the DSD flex.

Visibility Large LED display

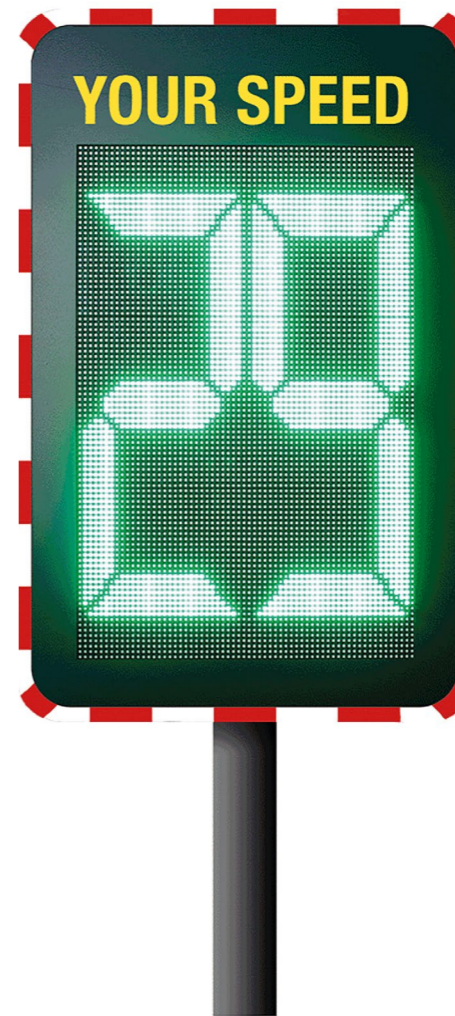
Speed display or message display board - regardless of the mode in which the DSD flex is operated, the high-performance LEDs (display height of approx. 80 cm/31.5") achieve excellent definition and clarity! Furthermore the automatic brightness adjustment of LEDs allows the DSD flex to be one of the most flexible and visible displays on the market.

Stability Solid and robust

The new DSD speed display system is extremely robust. It boasts a UV weather resistant and high impact resistant plastic case plus a scratch-resistant Makrolon front panel. The most durable sign available!

Lightweight Very easy to install

With a low weight of approx. 8 kg, the DSD flex can be easily installed by anyone. Of course, this also benefits safety at work.



Software myTrafficdata

Our myTrafficdata software myTrafficdata is the communication center. The LTE modem integrated in the DSD flex enables the display to be configured quickly and easily.

Furthermore your traffic data is available straight away on your PC (subject to your LTE/network speed). Meaningful traffic data reports - with just a few clicks!

ARGOS permanent - AI traffic Counter and Analyzer

ARGOS permanent is an integrated camera system that transforms traffic flows into instant data, using AI. The recommended install height should be at least 4m above ground level. A permanent AC mains or 12V DC power connection is required. For low light visibility situations ARGOS requires a passive light source (e.g. street light). As with our mobile version of ARGOS, the permanent unit takes advantage of the latest camera technology, helping to reduce glare and shadowing.

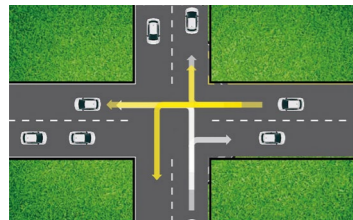
ARGOS analyses highway, bicycle and footpath intersections and fully visible roundabouts. It delivers traffic flow data in real time via ethernet or a cell connection to the customer's own system or to mytrafficdata2.com. In addition, tailored measurement periods can be uploaded individually to mytrafficdata2.com to obtain more granular results. ARGOS is your first step in building a smart city system. As long as power connections are available, ARGOS can also be used on a cyclic basis at different measurement sites throughout your city or municipality. Real-time data recording enables traffic flows from a variety of highways to be sent to a master server for further processing. In particular, bicycle and pedestrian counting can be further refined across a wide viewing area. Furthermore occlusion is significantly reduced due to the 4m mounting height.

With its compact size (23 cm x 12 cm x 7.5 cm) ARGOS is not immediately recognizable as a camera. By converting the image data in real time into traffic flow data in the system, the data file size is significantly reduced. However video recordings are still available as an option, subject to local bylaws on privacy.

ARGOS can also be used in combination with other media systems e.g. microphones, to provide access in the event of a system malfunction. Please feel free to reach out to DKT powered by DataCollect for further information.



Artificial intelligence Immediate image processing!



Crossroad

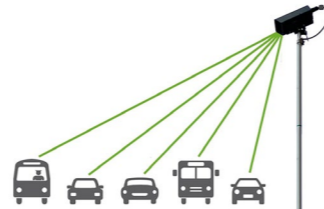
Record of turning relationships including vehicle classification



Areas of application

Roundabout

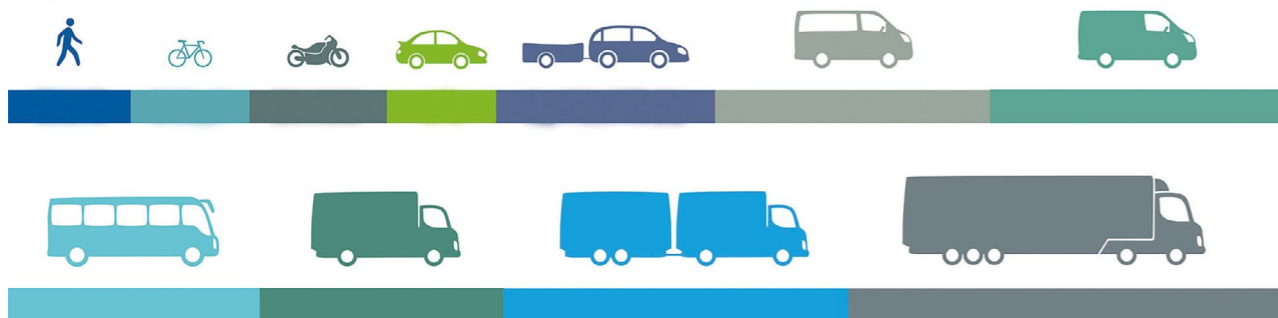
Recording of the origin and destination traffic including vehicle classification



Multi-lane road / motorway

Recording of vehicle quantities, classification and speed

11 Object classes



myTrafficdata 2.0

The web-based evaluation and control center - the future of your traffic data management!

The web-based myTrafficdata 2.0 programme package was specially developed to work with the video monitoring system ARGOS. Create meaningful reports in seconds, manage your data collection points and make use of dynamic representations of traffic flow at intersections. Clearly display up to 11 different types of object classes in your PDF report or export the raw data as a *.csv or *.xls file. Your user ID and password allow you to access your data wherever you are.

Evaluaciones detalladas a través de nuestra plataforma de comunicación por Internet

myTrafficdata 2.0

Vehicles

Fahrzeuge gesamt	6605
LKW	52.6 % (3472)
Transporter mit Fenster	21.3 % (1404)
LKW mit Anhänger	10.5 % (692)
Fahrrad	10.2 % (671)
Transporter ohne Fenster	5.5 % (366)

Vehicle classes

	E → W	W → E
vMin	30.0 km/h	32.0 km/h
vMax	68.0 km/h	69.0 km/h
vAvg	50.0 km/h	50.1 km/h
v15	45.0 km/h	45.0 km/h
v50	50.0 km/h	50.0 km/h
v85	55.0 km/h	55.0 km/h

Representation of nodes

The web-based myTrafficdata software package is the communication center for all systems of DKT powered by DataCollect provides secure access to your traffic data and systems wherever you are. myTrafficdata enables the user to create setup files, visualize graphs and reports, management of his traffic networks / sites and to process external data formats.

Web App

WAP

REPORT

30 40 50

SETUP

UPDATE FIRMWARE

MANAGEMENT

SDR radar traffic classifier - Measure successfully, evaluate easily, plan sustainably!

Non intrusive measuring system

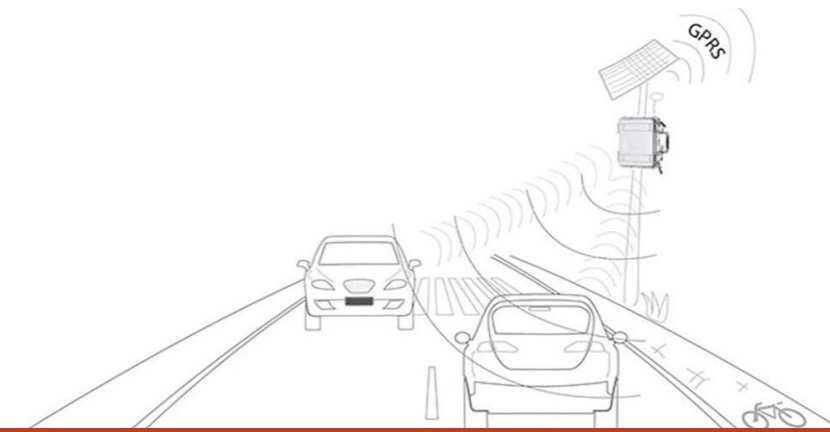
The SDR radar traffic classifier is a non intrusive measurement data acquisition system. It serves the traffic planner as the perfect tool for traffic surveys. The easy setup of the self-calibrating SDR and online traffic monitoring can be done on site by the use of a smartphone without interrupting the traffic flow. Modern on-board GPRS wireless communication enables the user to access the data remotely without being on site.

Environmentally friendly power supply

The low power design of the SDR in combination with the solar power option extends the SDR data collection capabilities to 365 days per year.

Flexible and future-proof

Which kind of traffic data do you need today? Which kind you might need in 5 years? The versatile traffic data collection device will collect today and tomorrow's traffic data and the flash updatable firmware will ensure future compatibility!



A difference is made between two areas of application.

for 2 opposite lanes

SDR traffic/traffic+

With SDR traffic / traffic + you receive valid data, for example:
What is the current vehicle speed level per traffic direction?
How many vehicles are traveling per traffic lane?
What is the current percentage of truck traffic?

for cycle route planning

SDR bike/bike+

At SDR Bike / Bike + you will receive valid data, for example:
How many bikes are riding per direction?
What is the speed of the bicycles?
What is the ratio of bicycles compared to the other traffic?



SDR traffic

Classification of traffic in two classes car/truck



SDR traffic +

Classification of traffic in 4+ classes, overhead installation available



SDR bike

Directional count of bicycles on bicycles paths.



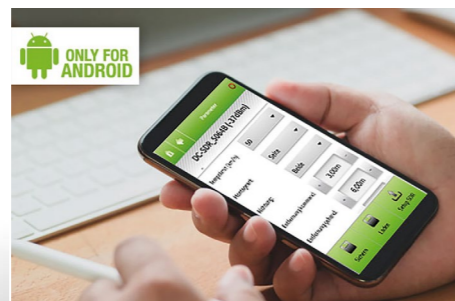
SDR bike +

Detection of bicycles and other vehicles in one driving direction.



GPRS DIRECT

Always up to date
Your system can be updated at any time and GPRS will keep your systems always up-to-date. Install the newest firmware or book new functions, all from your workplace.



Easy communication via bluetooth to the SDR
With our user-friendly SDR App (for Android systems) you can set the SDR very intuitively and read out all traffic data.



Total control at any time with myTrafficdata!
Web-based access to you database wherever you are. You can access your data, visualize statistics and generate reports. Administration of several products is comfortable and safe.

Power supply

The right equipment for all locations Supply your SDR 24 hours a day without any problems.

Accessories SDR

Video link

SolarSystem

The SolarSystem in combination with the SolarPowerUnit contains a solar panel and a SmartBracket. The solid steel construction and the easy installation concept will allow a fast and secure installation at poles with a diameter up to 160 mm.



PowerUnit

The PowerUnit will enable the user to connect a main power source (110-240 VAC) to the entire product range. The PowerUnit contains a power supply / charger, battery and fuse and will fit into the SmartBracket deep battery bay.



AkkuPack

The AkkuPack (12V/18Ah maintenance-free sealed rechargeable battery with connection cable) enables the mobile operation of our systems. The AkkuPack will be inserted into the battery compartment of the system housing and allows an system operation up to 10 days. The battery can be charged by the battery charger.



Installation

Our innovative mounting concept allows for easy installation by one person.

Accessories SDR

Video link

SmartBracket

The SmartBracket is the base of the easy installation concept for it is product range of SDR, eTube receiver station and the SolarSystem. The solid steel construction will allow a fast and secure installation at poles with a diameter up to 160 mm. The installation at poles with bigger diameter can be done via steel bands.



Laser45

The Laser 45 is the ultimate tool to determine the exact and reproducible 45° horizontal installation angle of the SDR radar traffic classifier. If accurate speed data is important for the user, then an exact horizontal installation angle setup is a must! The Laser 45 will be hooked up to the SmartBracket installation bracket via air socket and the laser pointer can be used in combination with the Angle finder to adjust the horizontal installation angle of the SmartBracket.



Angle finder

The DataCollect Angle finder will enable the user to determine an exact vertical angle of the DSD radar speed display. The red reflective foil on the back will be used as a reflector for the laser light of the Laser 45 calibration tool during the horizontal angle finding process.



Padlock

High quality stainless Steel padlocks are compatible with all our products.



Power supply
The right equipment for all locations Supply your DSD 24 hours a day without any problems.

Accessories SDR

Video link

SolarSystem
The SolarSystem in combination with the SolarPowerUnit contains a solar panel and a SmartBracket. The solid steel construction and the easy installation concept will allow a fast and secure installation at poles with a diameter up to 160 mm.

PowerUnit
The PowerUnit will enable the user to connect a main power source (110-240 VAC) to the product range. The PowerUnit contains a power supply / charger, battery and fuse and will fit into the SmartBracket deep battery bay.

PowerPack
The Power Pack (12V / 18Ah maintenance-free sealed rechargeable battery with connection cable and weatherproof cap) enables mobile the operation of the DSD speed display. Power-Pack will be inserted into the battery compartment of the Smartbracket deep and allows an operation of the DSD up to 10 days. The battery can be charged by the battery charger.



Installation
Our innovative mounting concept allows for easy installation by one person.

Accessories SDR

Video link

SmartBracket
The SmartBracket is the base of the easy installation concept for it is product range of SDR, eTube receiver station and the SolarSystem. The solid steel construction will allow a fast and secure installation at poles with a diameter up to 160 mm. The installation at poles with bigger diameter can be done via steel bands.

SmartBracket deep
The SmartBracket deep is the base of the easy installation concept for it is DSD radar speed display (SID) but also can be used to house a PowerUnit for the SDR and eTube receiver station. The solid steel construction will allow a fast and secure installation at poles with a diameter up to 160 mm. The installation at poles with bigger diameter can be done via steel bands.

Padlock
High quality stainless Steel padlocks are compatible with all our products.

Allen key
The Allen Key is an „One for all“ device and can be used to fix all DataCollect SmartBracket installation products.

Aluminium tripod
The light weight and solid Aluminium tripod will be used to operate the DSD or SDR in short time mobile applications. By using the tripod the system installation time can be minimized to a few minutes.

Steel tripod
The heavy and solid Steel tripod will be used to operate the DSD or SDR in short time mobile applications even at windy weather conditions. By using the tripod the system installation time can be minimized to a few minutes.



Configuration
Easy communication via Bluetooth with DSD speed display system

Accessories SDR

Video link

DataCollector
DataCollector handheld device incl. SD-card. The DataCollector allows an easy and fast data communication with the DSD/SDR by Bluetooth. From a distance of up to 80 m, traffic data can be retrieved, stored on a SD-card and new settings can be transmitted into the DSD/SDR.

DSD Applications
We offer 2 intuitive and user-friendly apps for the display system.
DSD Light App – change the speed threshold
DSD Full App – parameterization and readout of traffic data
For installation on Android smartphones and / or Android tablets.



Customer		Delivery address	
Contact		Contact	
Street, no.		Street, no.	
Postal code, place		Postal code, place	
Telephone		Sequence no.	
E-mail address		Date of order	
Version		Desired date	
Comment			

Pos.	Article number	Item description	Part	Total price in euro
01	DSDLAKKU	DSD light speed indication system with battery Red/green colour change, PowerPack, DataCollect 2041 automatic quick charger, Intelligent installation bracket, Security, mobile phone application		
02	DSDLSOLAR	DSD light speed indication system with Solar Red/green colour change, SolarSystem 19 Ah, Intelligent installation bracket, Security, Mobile application		
03	DSDSAKKU	DSD smart speed display system with battery pack Red/green colour change, PowerPack, DataCollect 2041 automatic quick charger, Intelligent installation support, Security, Data memory, Anti Race, Covert measurement, Bi-directional measurement, WebReporter, Mobile phone application		
04	DSDSSOLAR	DSD smart speed display system with Solar Red/green colour change, data memory, anti-noise, concealed measurement, bidirectional measurement, WebReporter as well as SolarSystem 19 Ah, Smart Bracket for installation, Security, mobile phone application		
05	DSDPAKKU	DSD pro speed display system with battery pack Red/Green colour change, PowerPack, DataCollect 2041 automatic quick charger, Intelligent installation support, Security, Data memory, Anti Race, Covert measurement, Bi-directional measurement, WebReporter, Mobile Application		
06	DSDPSOLAR	Speed Display System DSD pro with Solar Red/Green colour change, SolarSystem 30 Ah, Intelligent installation bracket, Security, Data memory, Anti Race, Covert measurement, Bi-directional measurement, WebReporter, Mobile App		
07		Solar System		
08		Power unit (DSD)		
09		Power supply (DSD)		
10		Flat pole mounting		
11		Depth pole mounting		
12		Padlock		
13		Allen key		
14		Aluminium tripod		
15		Stainless steel		
16		Data collector, handheld terminal incl. SD card		
17		Battery (SDR)		
18		Laser 45		
19		Transporter		



safe transit solutions:
modular, interconnected and reliable

www.dkt-international.com

DKT DEUTSCHE KENNZEICHEN TECHNIK GMBH

HEADQUARTERS: LADESTRASSE 1 • D-22926 AHRENSBURG • +49 4102 8043400

PRODUCTION, MARKETING, ADMINISTRATION: AM ÖFERL 37-43 • D-82362 WEILHEIM I.OB • +49 881 642-0

INTERNATIONAL SALES DEPARTMENT: GEWERBESTRASSE 8 • D-87787 WOLFERTSCHWENDEN • +49 171 7734939

INFO@DKT-INTERNATIONAL.COM • WWW.DTK-INTERNATIONAL.COM • GERMANY

